



The design of the building and its furnishings was selected with painstaking care and in good taste by Mrs. Martha Kearley, president of the company founded in 1949. Her son Rob is also in the business.

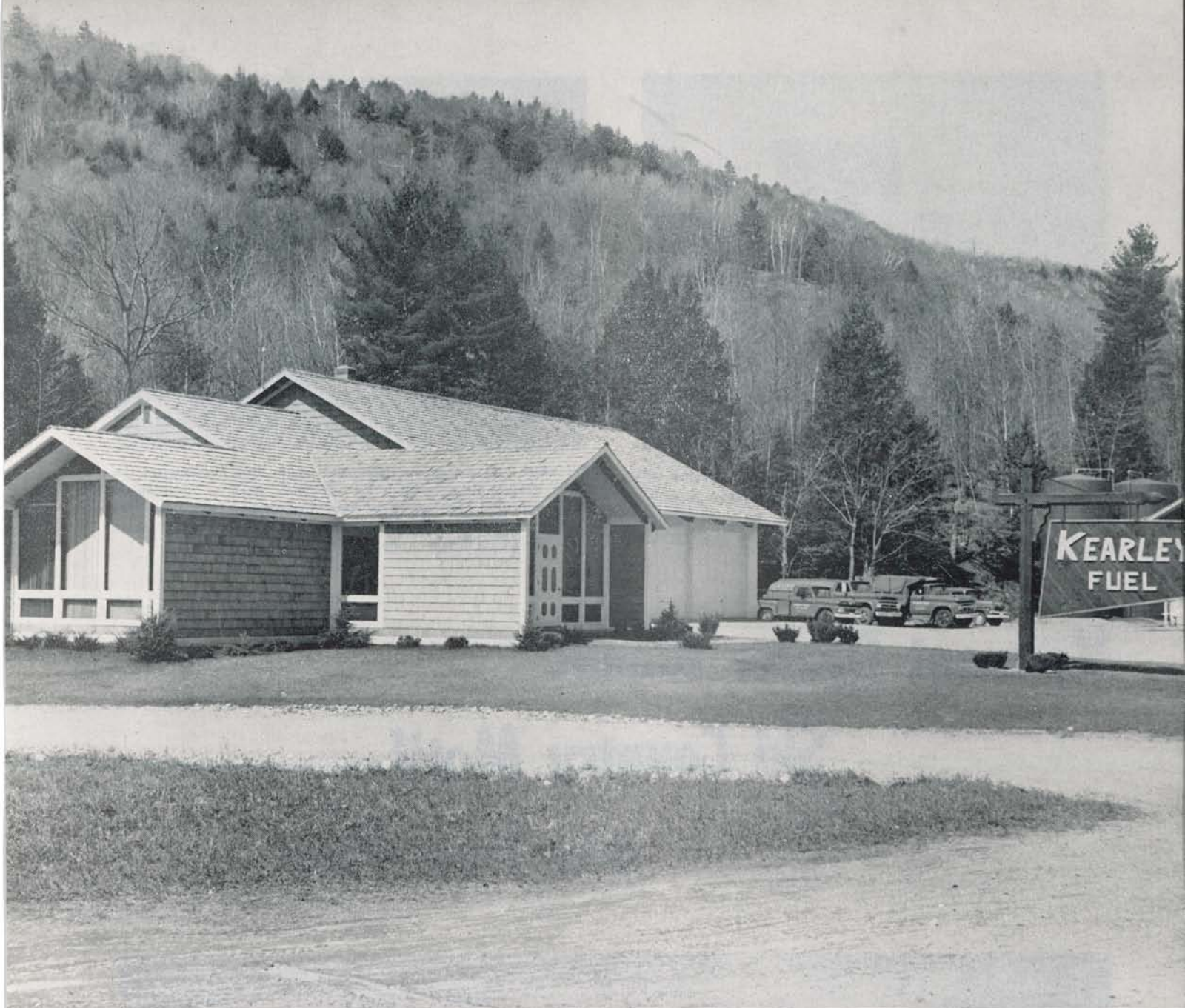


The office area reflects the immaculate decor that encompasses the entire Kearley plant, which is kept spotlessly clean — an excellent image for clean and modern oil heat. The building has a floor area of about 5,500 square feet, of which the garage is about 3,300 square feet. The garage height to the roof peak is 30 feet.

Vermont Dealer Blends Ski Country Motif into New Plant



There are 10 vehicles in the Kearley fleet, of which three are in the service category. A cardinal rule of the company is that all of them are kept clean and polished at all times, even when the roads become sloppy and slushy. The drivers take pride in maintaining themselves and their vehicles. The number of employees fluctuates seasonally, averaging 10 year round, with seven working outside in either delivery or service.



Skiers on their way to Stratton Mountain ski area and other slopes in southern Vermont pass this impressive Swiss-chalet-type headquarters of the Kearley Fuel Service in Jamaica. The company moved into the new plant last August and still maintains an operation at its old quarters in nearby Townshend. Kearley's storage capacity is slightly more than 100,000 gallons, three-quarters of which is at Jamaica and the balance at Townshend. The loading rack also has the chalet-type roofing.



A view of the front entrance to the Kearley office. The company conducts an extensive line of business, including fuel oil, kerosene, gasoline, LP gas, oil heating equipment, heating and cooking appliances, and servicing of equipment. Among its customers are inns, base lodges, schools, homes, churches, town hall and ski chalets.